



# Contents

 GscEmail version 6.6.1.x .....	2
How to install .....	2
How to configure .....	2
Example configs google email: .....	4
Example config a personal smtp server .....	5
Note .....	5
 GscBackUp version 6.6.1.x.....	6
How to install .....	6
How to configure .....	6

# @ GscEmail version 6.6.1.x

## How to install

This program comes with the installation package of the Gsc06 program

You can download it separately from the web page [progs.green-spec.com](http://progs.green-spec.com)

You may need to download the libraries to be able to send emails with the program. (files : libeay32.dll, ssleay32.dll). those libraries has to be installed in the directory of the program Gsc06.

## How to configure

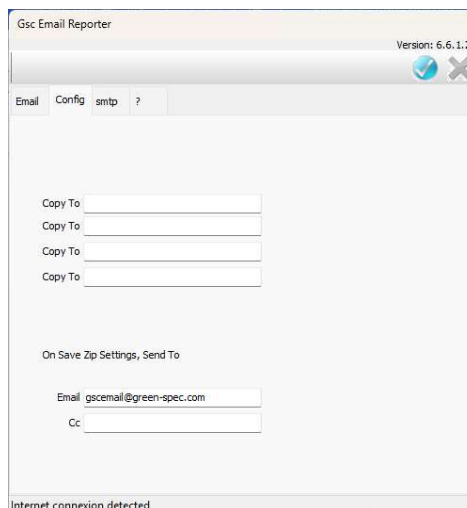
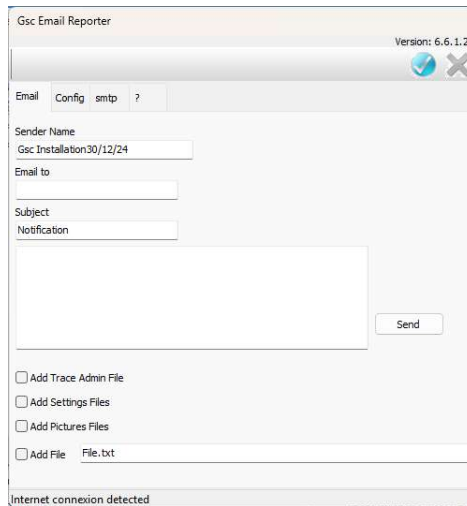
- Sender Name : name that appear on the received email
- Email To : set here the email of the concerned principal person to receive the email
- Subject : of the email
- Box : set here your message
- Button Send : test of sending messages

In case of alarm notification, the program will use the box to fill the message of alarm and auto send the email

- Add  
the trace file AdminEvents.E10 to the email  
the settings directory zipped  
the pictures directory zipped  
a selected file

The bar on the top have 2 buttons:  
Save the entered settings – Close the program

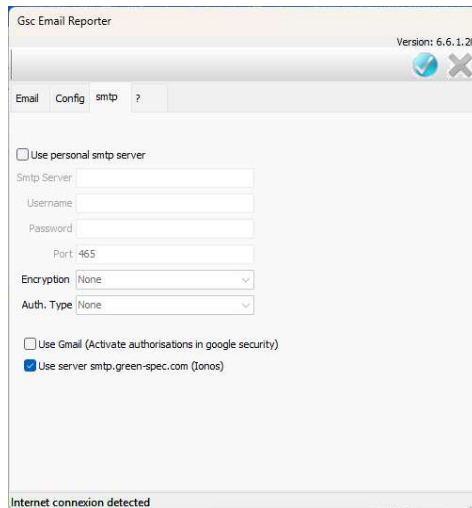
- Copy To : enter different email where alarm and notifications emails will be sent.
- Zip settings , Sent to :  
enter here the email where the Backup of settings/pictures coming from the program GscBackUp will be sent to



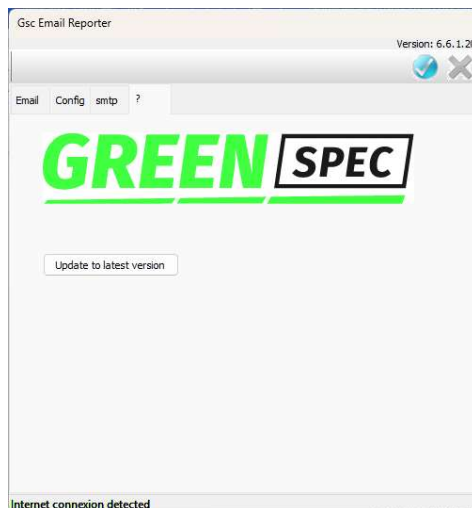
## Smtplib server

3 options is possible to have :

- 1- Use your personal smtp server related to your ISP ,  
check this information from your ISP documentation
- 2- In case that you use a Gmail address, check this box ,  
enter the smtp, username and password in the boxes above  
an example of configuring your goggle email is shown below
- 3- Use the default program smtp server.  
The domain used is smtp.ionos.fr.  
you may need to allow the access to this address in your router or in your firewall allowed address



This page is only used to access directly to the link to download the latest version online. Please try to keep always this program up to date as the security on internet change regularly to secure internet exchange.



## Example configs google email:

Go to your google Account, Security, and search for “Connect with an application”

The screenshot shows the Google Account Security settings page. The search bar at the top contains "connect with an application" (marked with a red circle 2). The left sidebar has "Security" highlighted (marked with a red circle 1). The main content area shows "You have security recommendations", "Recent security activity" (listing "App password created" at 21:28), and "How you sign in to Google" (listing "2-Step Verification" as "On since 21:23"). A right-hand help panel is open, titled "Sign in with app passwords", with a red circle 3 pointing to the "Create and manage your app passwords" link.

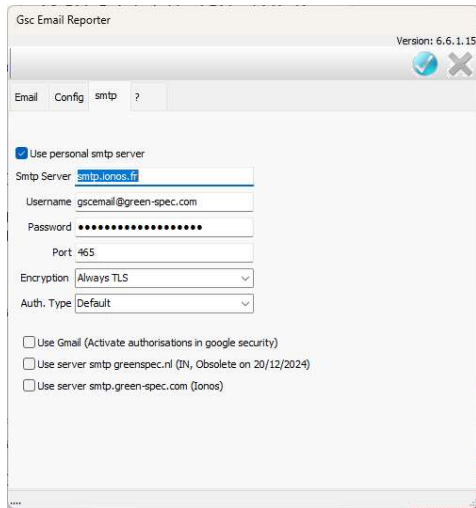
Generate an app password from Google after entering the name of the app “GscEmail”

The screenshot shows the "App passwords" page in Google Account. The page title is "App passwords". Below the introductory text, there is a section titled "Your app passwords" which lists "GscEmail" (marked with a red circle 4) as created at 21:28 and last used at 21:29. Below this, there is a form to create a new app-specific password with a text input field for "App name" and a "Create" button.

Use your google email and the password generated to enter in the program GscEmail.

Your own Gmail password will never be revealed and the program is only sending email and not receiving any email from google.

### Example config a personal smtp server



### Note

yahoo emails use a more complex authentication method. We may add this in future updates.

You may have different kind of errors message related to the smtp server. Please refer to the recommendation of your ISP.

# GscBackUp version 6.6.1.x

## How to install

This program comes with the installation package of the Gsc06 program

You can download it separately from the web page [progs.green-spec.com](http://progs.green-spec.com)

You need to check the box “launch GscBackup” from the menu config of the program GscLauncher.

## How to configure

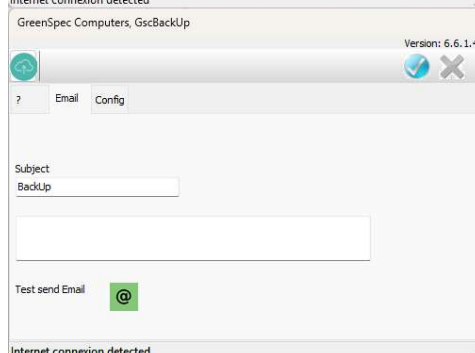
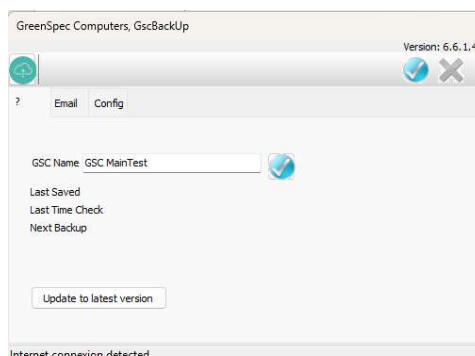
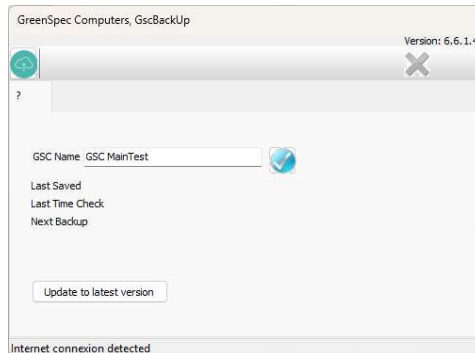
- Buttons on the toolbar :  
on the left: backup now, this button permit to force a launch of a backup of the directories settings and pictures as zip files sent via the program GscEmail to the configured email
- On the right, close the menu and hide it on the hided icons bar (next to the clock on the windows task bar)
- Gsc Name : set here the name of the installation. This name will be shown on the email sent. Set a name related to your installation to be ease to found it back in a future needs

Update to latest version : to download the latest version online.

Please try to keep always this program up to date as the security on internet change regularly to secure internet exchange.

Here all pages of the program are shown. This depends on the user level of the main Gsc program on the launch of the program. in case that you need to force the installer level click on the sequence Ctrl+shift+F9

On this page, you can enter a subject and a message text and then click on the button (@) to send email as a test of the good functioning of the backup procedure



On this page, you can read the emails where the backup is sent (see program GscEmail, page Config, “send zip files”  
Days Periode: You need to set here the periodicity of sending a new backup by email to the email address above.

